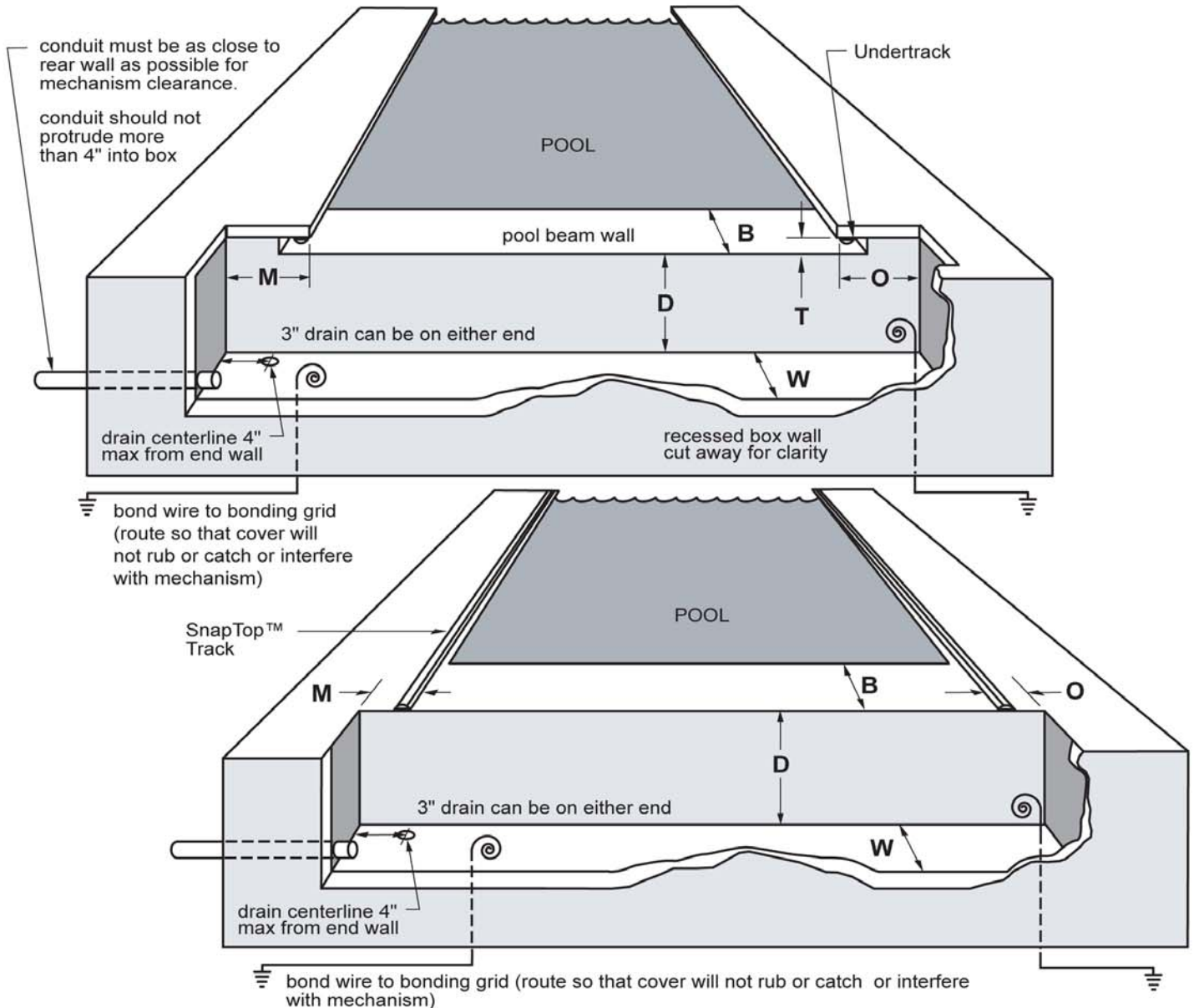


Installation Instructions  
**Autosave™ Spa Cover Recessed Box Requirements**

RECESSED BOX DIMENSIONS	MOTOR	OPPOSITE	BEAM	THROAT	DEPTH	WIDTH
	9" min*	9" min	10" min	2"	9" min	12.5" min

\* Auto Shut-off units may require an additional 5.5" space on the motor side.



**Conduit Requirements:**

Conduit is always located at the motor end of the box. Motor is equipped with a 3/4" knockout hole.

- Switch:** 1 conduit 1/2" ID (from switch location to box)
- Auto-shutoff:** 1 conduit 1/2" ID low voltage (from box to switch location)  
1 conduit 3/4" ID high voltage (from G.F.C.I. breaker to motor end of box)
- Wireless:** 1 conduit 3/4" ID (from G.F.C.I. breaker to motor end of box)
- Bond Wire:** 2 bond wires 8 AWG, one at the motor end and one at opposite end (from pool bond grid with a minimum of 4 ft. inside box)