



## **Underside™ Track**

# General Information for installing an automatic pool cover

This is a general guide on factors to consider for the installation of an automatic pool cover.

Detailed installation instructions are available.

Detailed specifications for V-Lid, and Auto-Save (for 10 x 20 or less) are available, contact our office.

### **Arizona Pool Covers LLC**

6100 W. Gila Springs Pl. #3 Chandler, AZ 85226

Central Arizona Phone (480) 829-0083 • Fax (480) 829-1101

Southern Arizona Phone (520) 408-1579

## **Time of events with automatic cover construction**

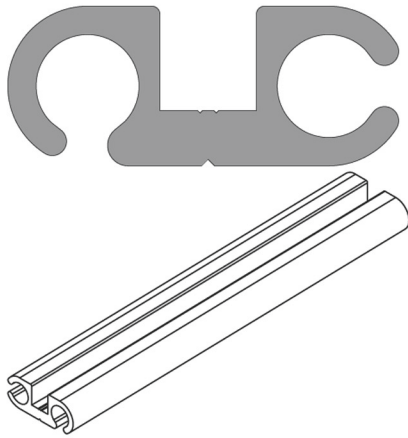
- 1) Designer creates pool with cover and receives or creates cover estimate.
- 2) Pool is sold. Designer drawings go to construction for processing
- 3) ***Recommend sending drawing of pool to Arizona Pool Covers at this time. Therefore, Arizona Pool Covers can review the cover details and try and prevent possible errors before the pool is constructed. And be aware of possible special scheduling needs for the builder. Sales agreement is signed with Arizona Pool Covers, deposits required. Color selections for fabric and powder coating are required for order processing.***
- 4) Excavation: Including area for cover housing
- 5) Steel: Including area for lower beam and cover housing
- 6) Electric: Control switch and cover housing ***may require wiring diagrams*** for type of control purchased
- 7) Plumbing: Drainage from cover housing. At end of cover housing.
- 8) Guniting: ***Cover may be measured and ordered at this time if requested. This will reduce the delivery delay at the end of the pool construction phase. Pools using "Vanishing Trays" see cover housing on sales agreement require special order vanishing trays (ordered after guniting with at least 2 week processing time) to be at jobsite. Required at deck.***
- 9) Tile: Tile lower beam, Front and rear have ¼ round or Bull Nose. Water Line tile must be set before track installation.
- 10) ***Track installation before deck is installed. Flagstone, vertical walls may require special scheduling and materials. We request a week notice to schedule effectively. This is the standard time of measurements and ordering the pool cover system.. Typical material & order processing time 2-3 weeks. Powder coating or special orders may create delays. Track may be placed into preinstalled pool builder forms when requested.***

### **Contract and deposit required, before tracks delivered at this phase.**

- 11) Decking: If pool has vanishing trays, trays to be at jobsite prior to decking.  
**Pools with vanishing trays may require additional deposit at tray delivery.**
- 12) Wires pulled:
- 13) Cover can be installed at this point. Some inspectors request the unit (no fabric) installed before final inspection is approved.  
**PLEASE ADVISE OUR OFFICE 520-408-1579 OR 408-829-0083 OF ANTICIPATED INSTALLATION DATE AS SOON AS POSSIBLE**  
**Final payment required prior to installation.**

*Standard processing time is 2 – 3 weeks from time of measurements. Please keep our office informed of schedule change*

# TRACK OPTIONS

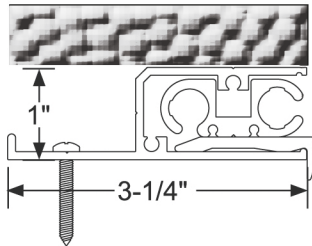


## Underside™ Track

- Mounted under deck coping
- Anodized aluminum
- Easier installation and replacement of rope

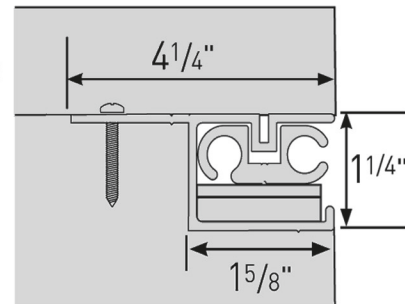
## Track Channel

- For concrete and fiberglass pools
- Raised-wall applications
- Track channel allows for custom cantilever profiles
- Foam or wood forms can be incorporated for deck profiles

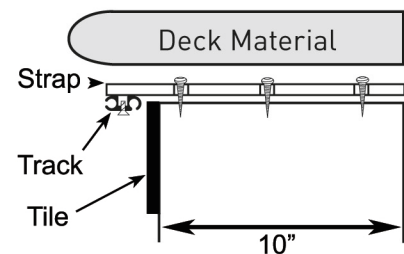


## Track Channel Inverted Mount

- For any deck surface, such as flagstone, slate or tile, that does not meet basic undertrack mounting conditions (surfaces less than 2" thick or softer materials)

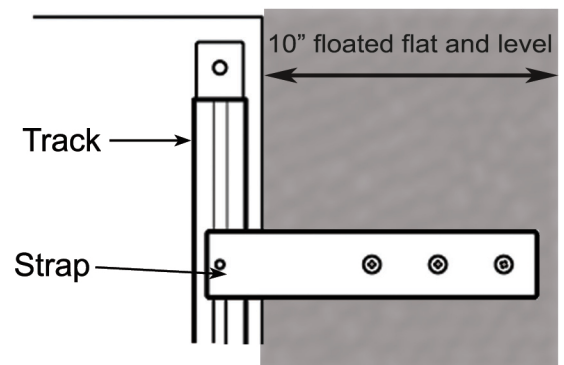


**WATERLINE TILE MUST BE SET BEFORE TRACK IS INSTALLED. FOR DECK STRAPS AND CHANNEL - TOP OF BEAM MUST BE FLAT AND LEVEL**



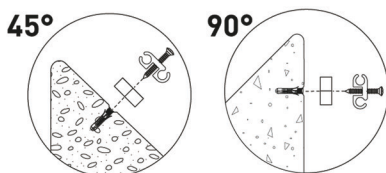
## Deck Straps

- For porous coping, brick, flagstone, and materials less than 2" thick
- Mounted every 2' of track
- Top of beam must be flat and level. Floated out to at least 10" from edge of pool



## Vanishing-Edge Pools

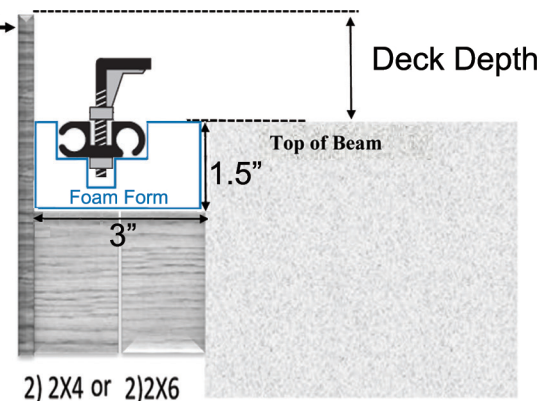
Create a 45° or 90° vanishing edge



## Perimeter Overflow

Create a pool for which water height appears even with the deck. A narrow channel collects the overflow water and allows for the glider arms.

## Form board

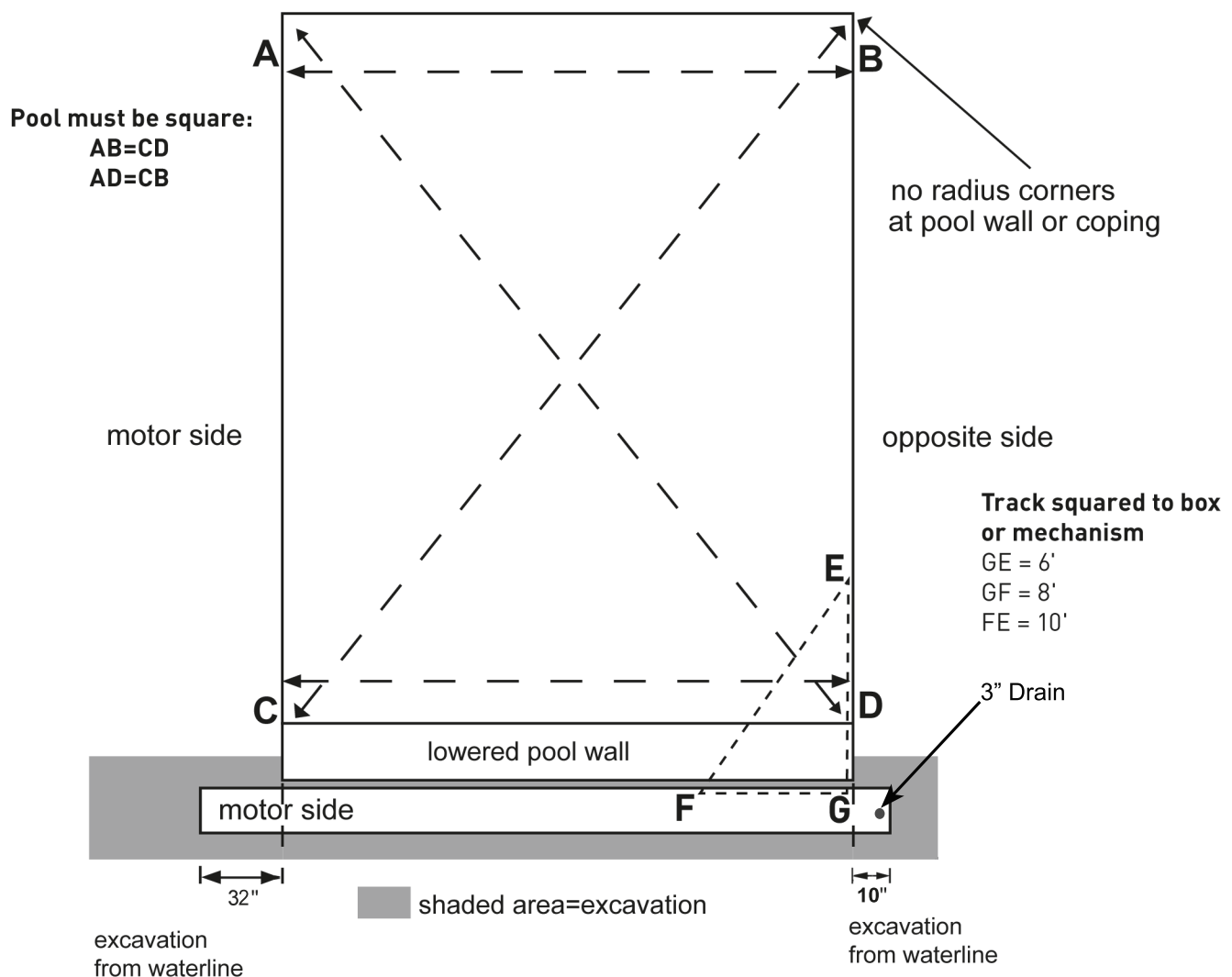


# EXCAVATION AND PLUMBING

Consider any special requirements for excavation and plumbing.

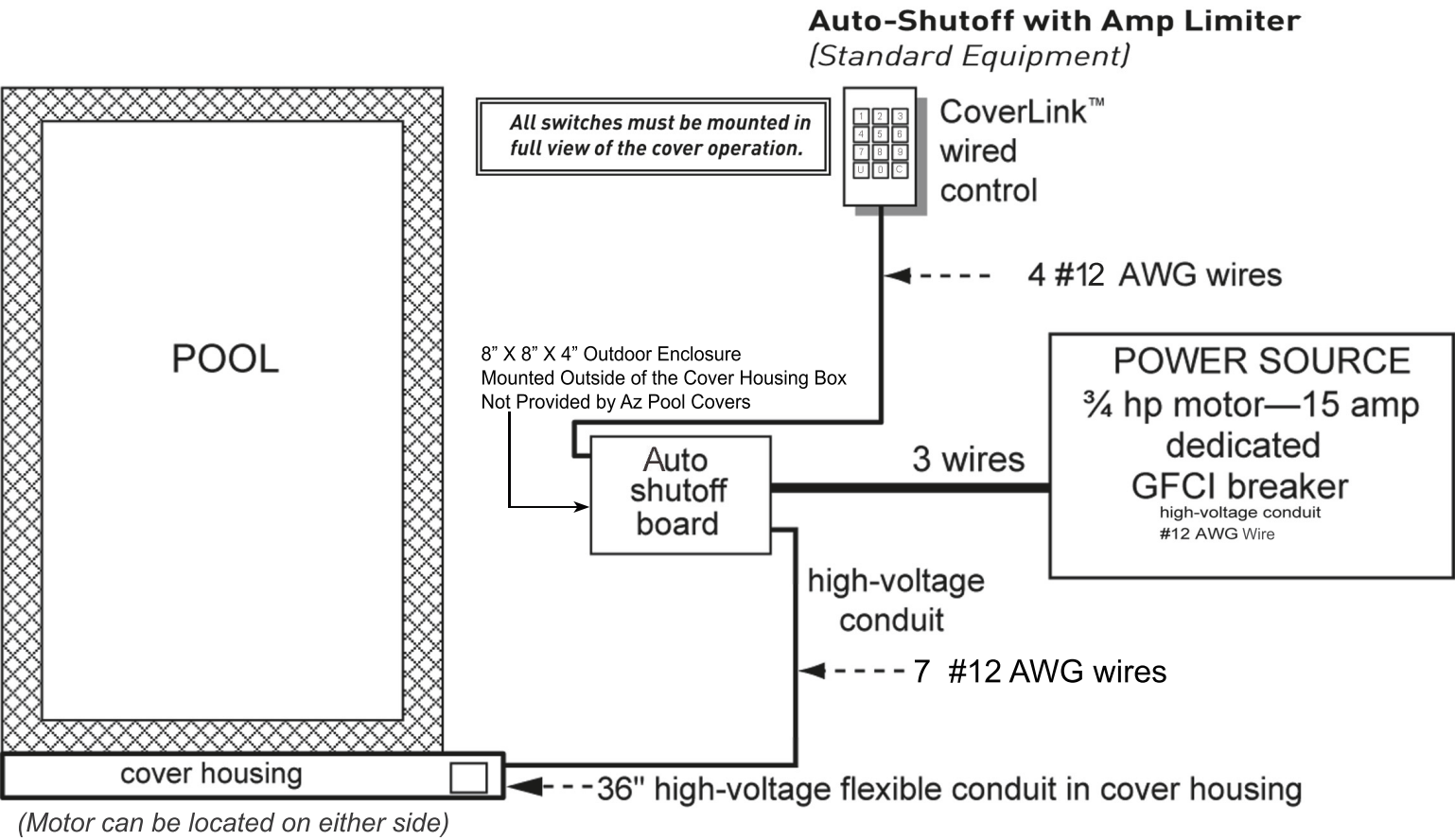
## Recessed Mechanism—Underside™ Track or Track Channel

1. The tracks (and rectangular pools) must be a true rectangle. The tracks must be perpendicular to the unit mechanism and recessed housing (90°).
2. Do not install plumbing within 14" of the deck in the housing area.
3. The motor can be on either end of the cover box.
4. Do not locate skimmers in the lowered pool wall.
5. All corners must be square (no radius) on the finished tile line or the coping.
6. Place 3" drain in floor at one end of recessed housing.

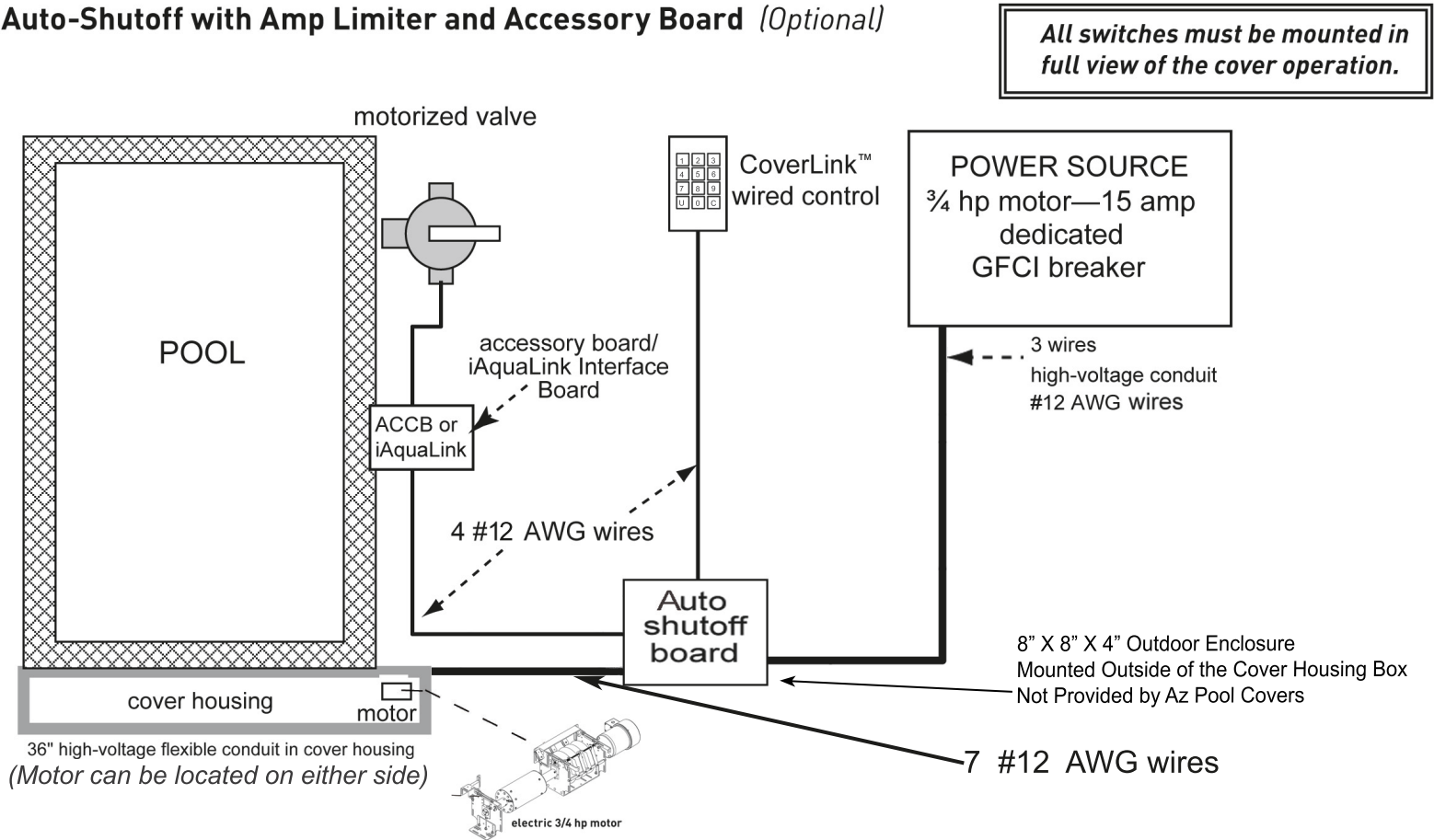




# ELECTRICAL



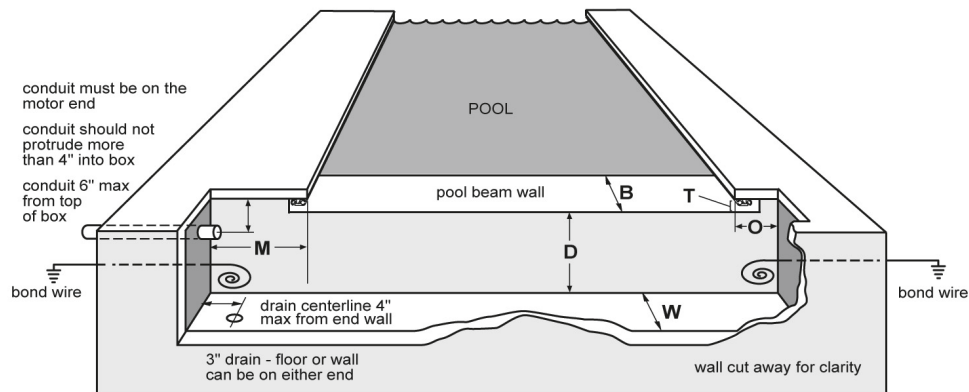
## Auto-Shutoff with Amp Limiter and Accessory Board *(Optional)*



# MECHANISM HOUSING

## Recessed Concrete—Underside™ Track

Wired Touch Pad and Auto-Shutoff need one 3/4" conduit.



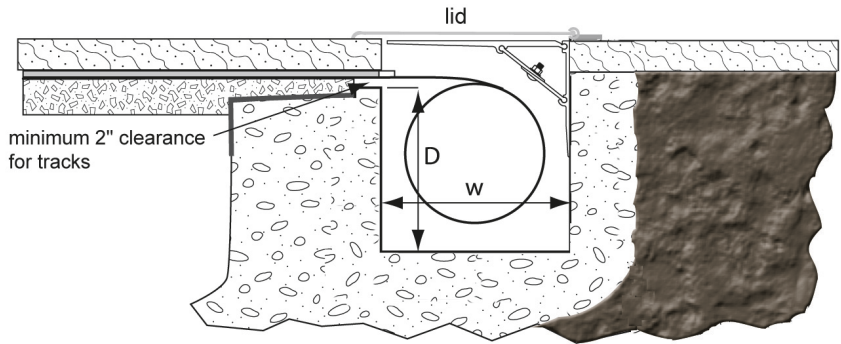
Underside Track Box Dimensions	MOTOR M	OPPOSITE O	BEAM B	THROAT T	DEPTH D	WIDTH W
Pools up to 65 ft long	32"	10"	8-12"	2" min to finished beam	14½"	14½"
Pools over 65 ft. long or 25 ft. wide and vanishing-edge pools—Call Arizona Pool Covers 480-829-0083						

## Recessed Concrete - Underside™ Track - Autosave™

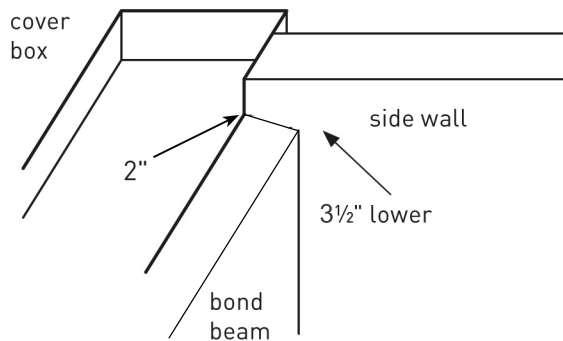
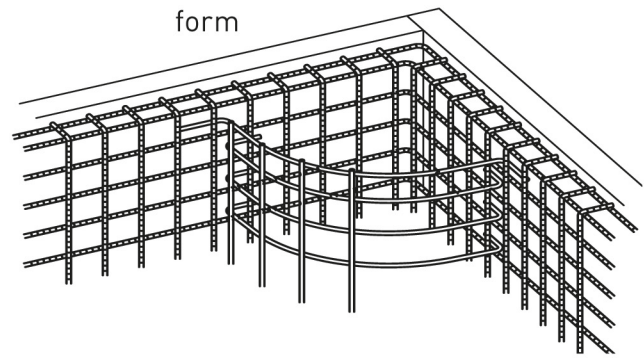
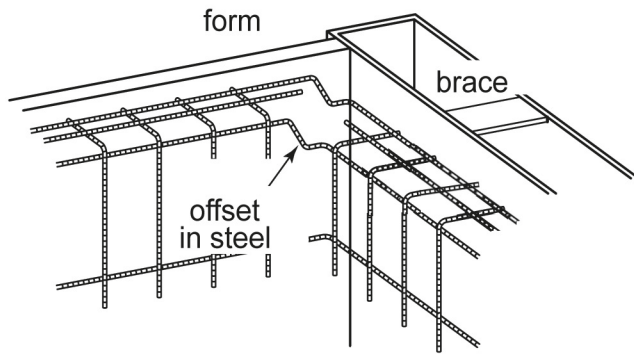
Underside Track Box Dimensions for Autosave™	MOTOR M	OPPOSITE O	BEAM B	THROAT T	DEPTH D	WIDTH W
Up to 13' or 200 square feet	9" min	9" min	10" min	2" min to finished beam	9"min	12-1/2" min
Auto-shutoff units may require an additional 5-1/2" space on the motor side.						

Note: Make sure you plan accordingly so your conduit does not interfere. For example, if the Autosave motor is below the mechanism, route the conduit behind the mechanism; if the motor is behind the mechanism, route the conduit underneath the mechanism.

## Box Side View—Underside Track

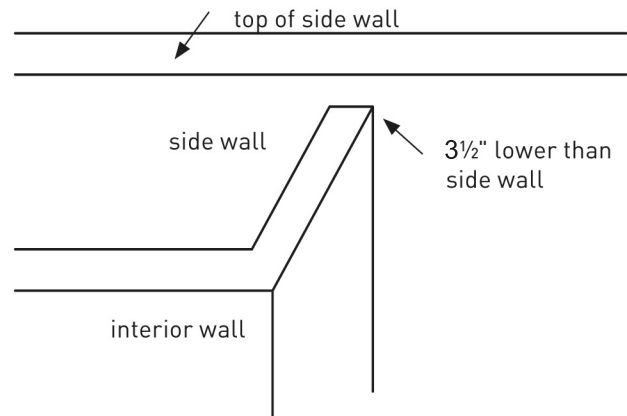


# Gunite Layout—Underside™ track



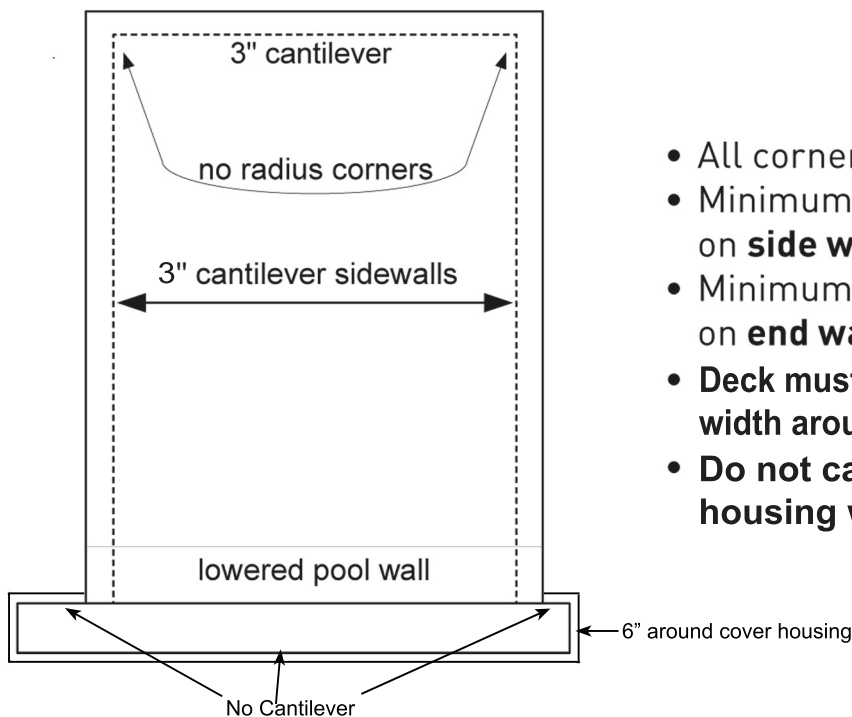
At the recessed box end, the pool wall (bond beam) must be shot 2" (1½" finished with tile) lower than the side walls. And 3½" on pool side.

The top inside pool corners (above the waterline) must be square, not radius.



Any interior wall, such as for spas, also must be gunited 3½" (3" finished with tile) lower than the side walls.

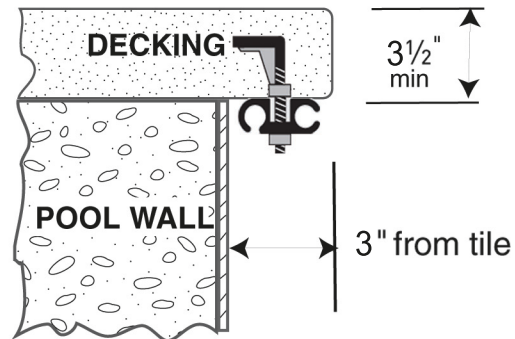
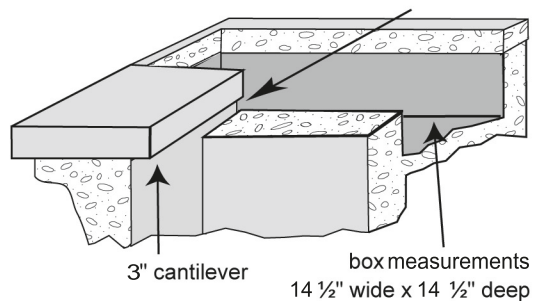
## Coping or Deck Requirements—Underside track



- All corners of the coping must be square
- Minimum **3" cantilever** from tile on **side walls**
- Minimum **3" cantilever** from tile on **end wall** opposite the mechanism
- **Deck must be flat, without slope, for a 6" width around the cover housing.**
- **Do not cantilever over pool cover housing walls.**

## Coping or Deck Requirements—Underside track (cont.)

Opening for the track must be 2" at box (1½" finished with tile), sloping to 3½" inside pool (3" finished with tile)

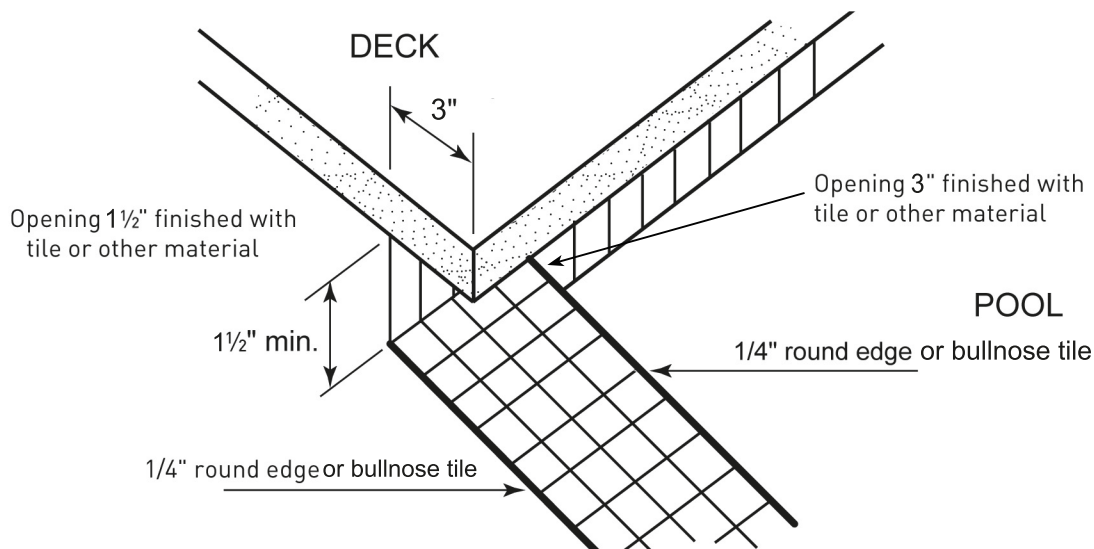


For track channel or stainless steel straps measurements see Track Options.

## Tile Beam—Underside track

The lowered pool wall is finished with a tile surface.

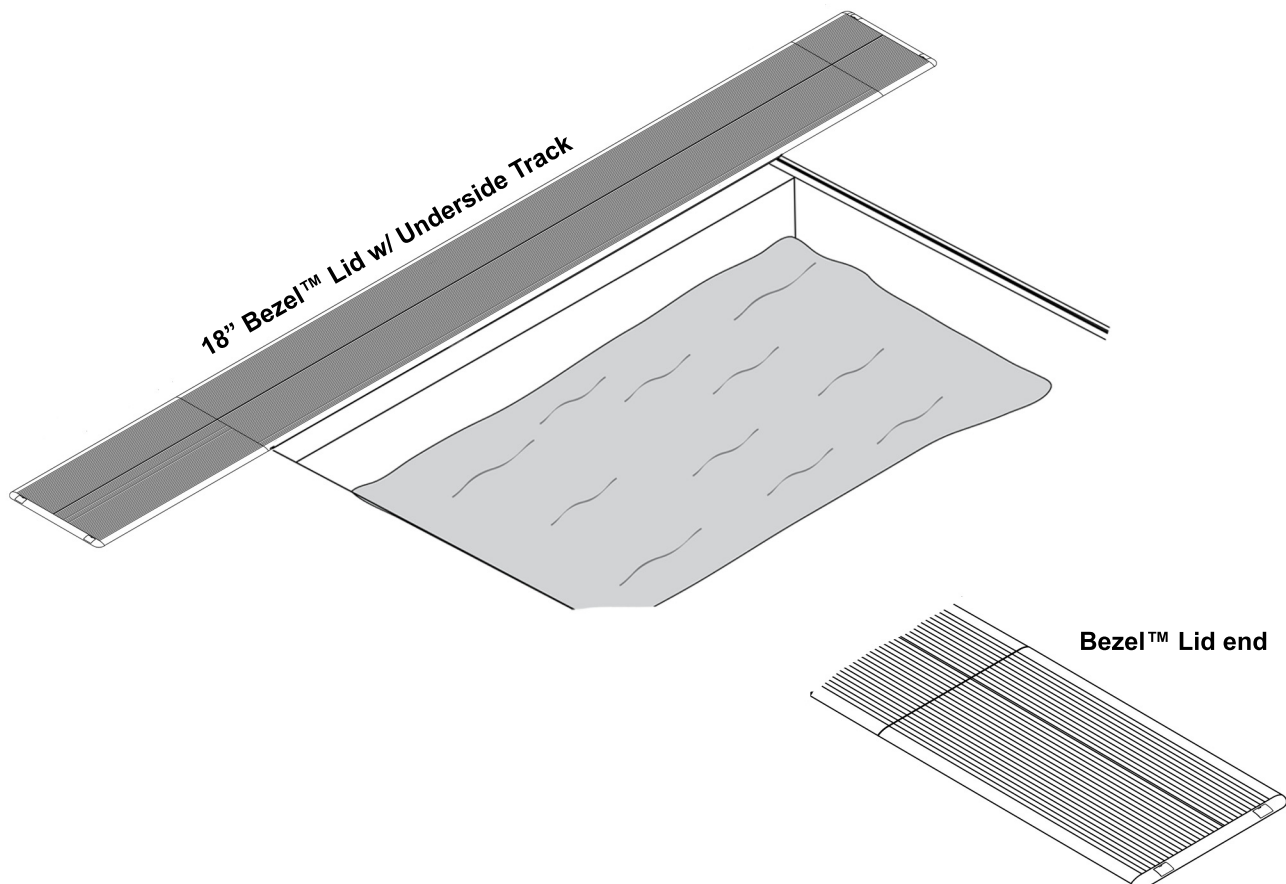
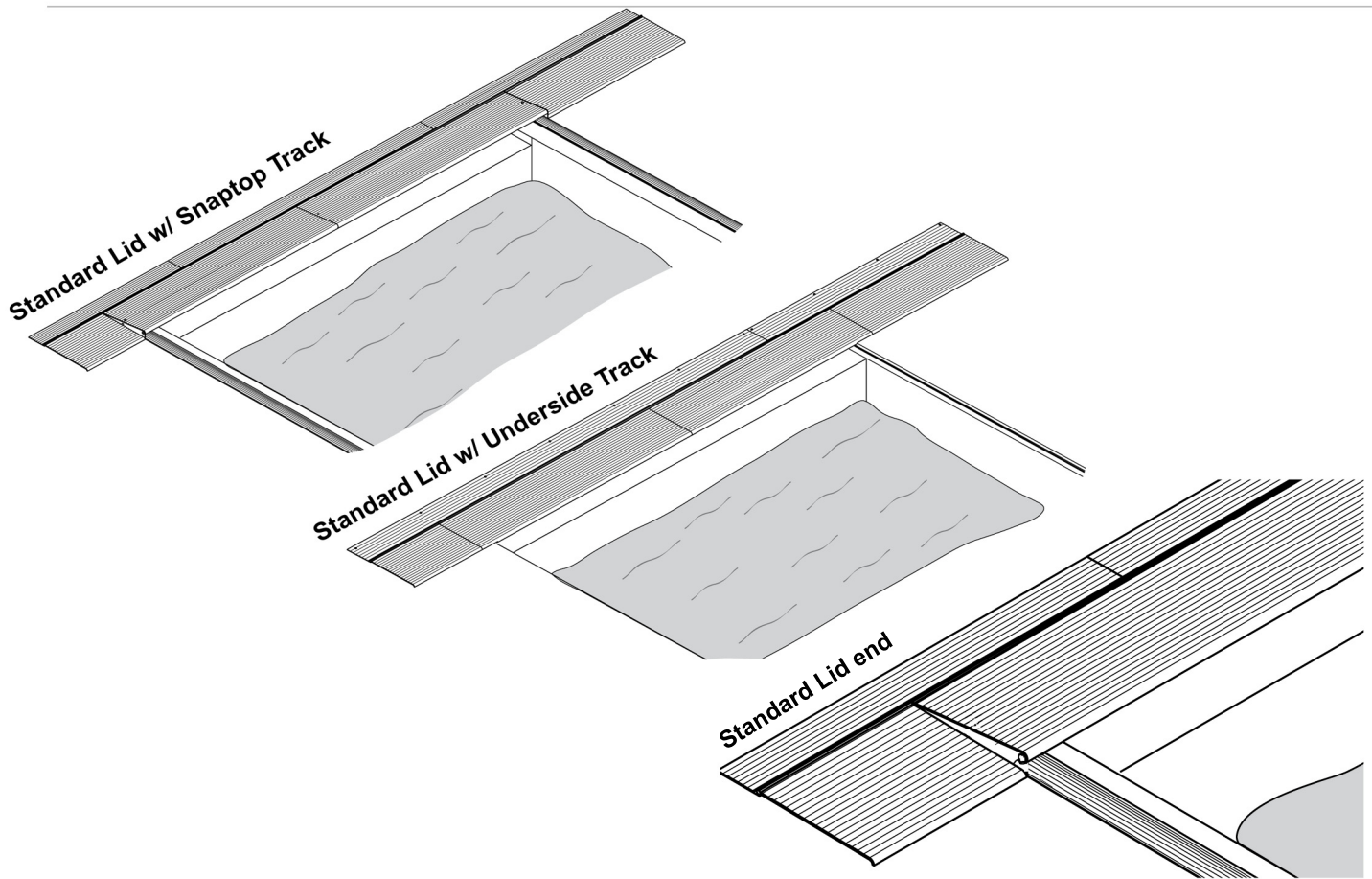
For the lowered wall edge, use a rounded tile on the front and back edges to minimize scraping on the cover.





# RECESSED BOX COVER

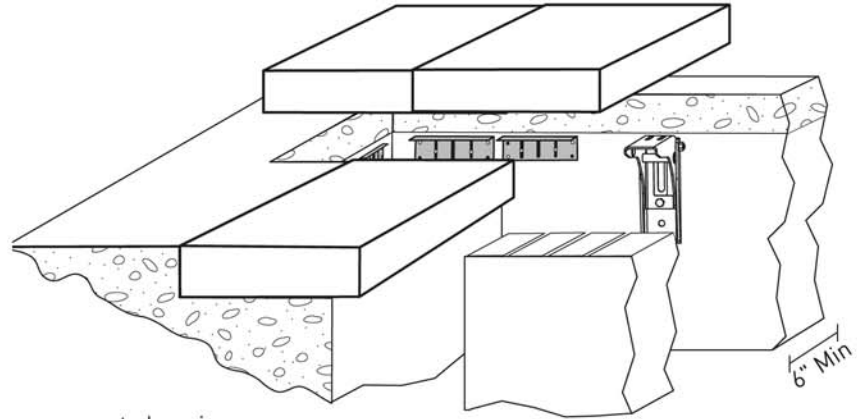
---



*All diagrams are for general information. Consult installation instructions for details.*

# VANISHING LID™ SYSTEM

## Vanishing Lid™ System



### NOTE:

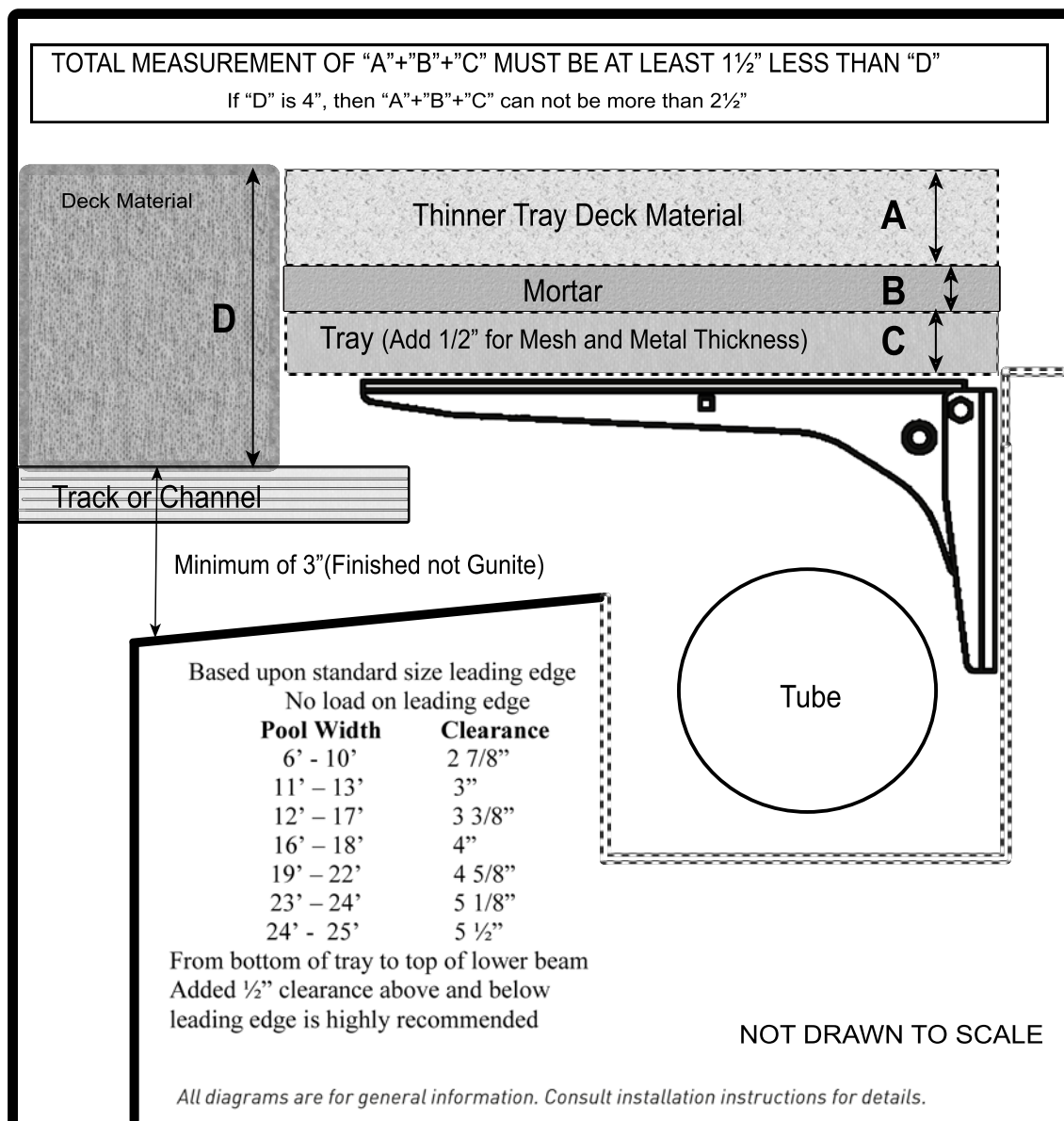
Walk-on Vanishing Lid systems require a concrete housing, or, if using a wood housing, a concrete wall must be poured behind the box for anchoring brackets.

### Walk-On Vanishing Lid

This design offers an adjustable tray support system for any type of deck material. Stainless-steel or aluminum trays and stainless-steel brackets provide the support base for a strong walk-on lid that can blend with the surrounding deck.

Note: The deck thickness must be increased for extended trays if the leading edge is going to fit under the tray. Contact Arizona Pool Covers for more information 480-829-0083

The maximum width of any tray is 24".  
The maximum length of tray is 24".





# SPECIFICATIONS

---

## Fabric

- **7-year limited prorated standard warranty**
- **18 oz., 28 mil Herculite premium bonded vinyl**
- **Low-stretch rope and webbing (2000-lb. break)**
- **9 standard colors: dusky blue, royal blue, light blue, aqua, forest green, beige, tan, gray, black, slate gray, and brown.**
- 35 custom colors

## Track Styles

- **7-year limited warranty on all aluminum extrusions**
- **All aluminum extrusions are 100% anodized**
- **Undertrack, universal or SnapTop™ track**
- **Safety-Lock track channel**
- Top-mounted track channel for concrete and fiberglass pools
- Inverted track channel for concrete or deck-on-deck applications
- 45-degree vanishing-edge pools
- 90-degree vanishing-edge pools

## Mechanism

- **Lifetime limited warranty on mechanism**
- **100% anodized aluminum frame and components**
- **Stainless-steel hardware**
- **Stainless-steel drive components**
- **Positive-shift system**
- **24-bearing #440 heavy-duty pulleys**

## Power and Controls

- **3-year limited warranty on electrical parts**
- **3/4 hp waterproof electric motor**
- **Safety lockout key control**
- CoverLink™ wired touchpad control
- Low-voltage water-feature shutoff
- **Auto-shutoff with amp limiter**

## Mechanism Covers

- **Standard 12" aluminum lid with 6" hinge**
- Bezel™ lids, 18"
- Vanishing Lid™ trays, 12"–24" wide with stainless-steel trays and stainless-steel adjustable brackets
- **Fiberglass deck-mounted mechanism ends**
- **Bench bracket frames**

## Safety

- \* **Exceeds ASTM F1346-91 requirements**
- \* **Full UL listing**
- \* **Bonding included with all systems**
- \* **Automatic water-removal cover pump included**

### \* **NOTE:**

Some cover manufacturers treat cover pumps and bonding as options for their systems. A solid safety cover without a pump is NOT approved to ASTM F1346-91 safety standards. The installation of an automatic cover system without bonding is not a UL-listed product.

**Standard items are in bold type.**