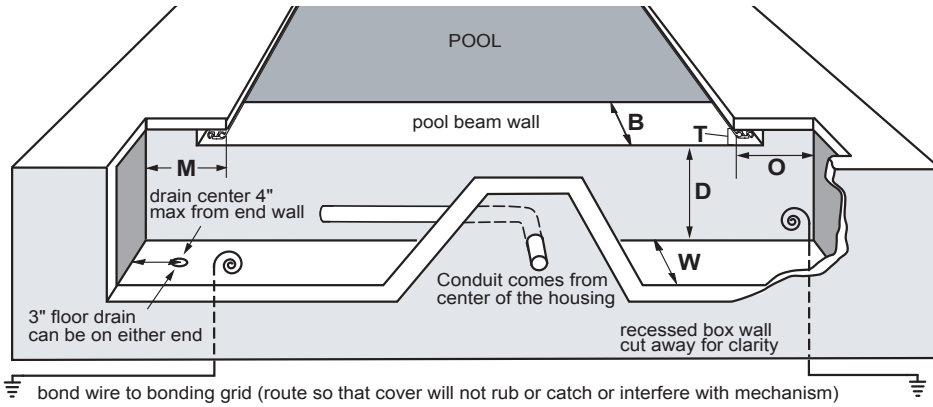
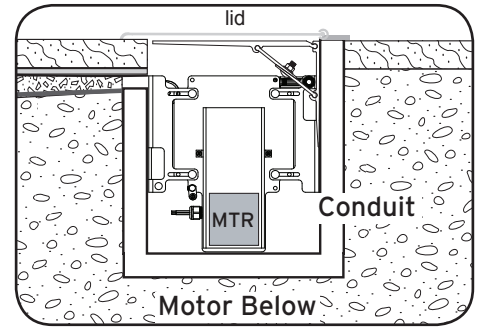


OPTION 1: Conduit comes from back of box.

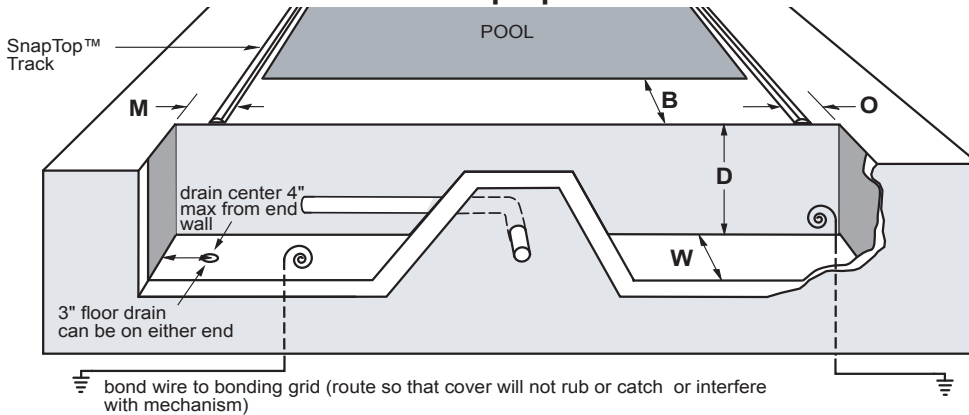
Underside Track



Side View



Snaptop Track



Dimensions For T4 Spa Up to 15' wide or 200 square feet	Motor M	Opposite O	Beam B	Throat T	Depth D	Width W
Motor Below	10" min	7" min	8" min	1"	13"min	9" min 14" max
w/ Auto-Shutoff	13" min	7" min	8" min	1"	13"min	9" min 14" max

Consult a certified electrician and the pre-wiring diagrams for conduit and bonding requirements.

Bond Wire: 2 solid bond wires 8 AWG 1 Motor end, 1 Opp End
(from pool bond grid with a **minimum of 4 ft. inside box**)

Bonding

In accordance with the requirements of the National Electrical Code (NEC), or in Canada the Canadian Electrical Code (CEC), the equipment must be bonded to all metal parts of the swimming pool, spa or hot tub structure and to all electrical components and equipment associated with the pool/spa water circulation system. The bonding must be accomplished by using a solid copper conductor, No. 8 AWG or larger. In Canada No. 6 AWG or larger must be used.

Note: To avoid interference, run the conduit from the center of the box using flex conduit with 1/2" seal-tight connector